

Making Leeds a child friendly city



CHILD IN THE CITY
HELSINKI 2019



Leeds

- The second largest Core City – a regional economic and social hub for Yorkshire and Humberside;
- The second largest Metropolitan Council in England;
- A growing city with an overall population of over 789,000;
- 168,000+ children aged 0-17;
- 30% of children live in 10% most deprived neighbourhoods;
- % children from BME families more than doubled in last 14 years to 35%.

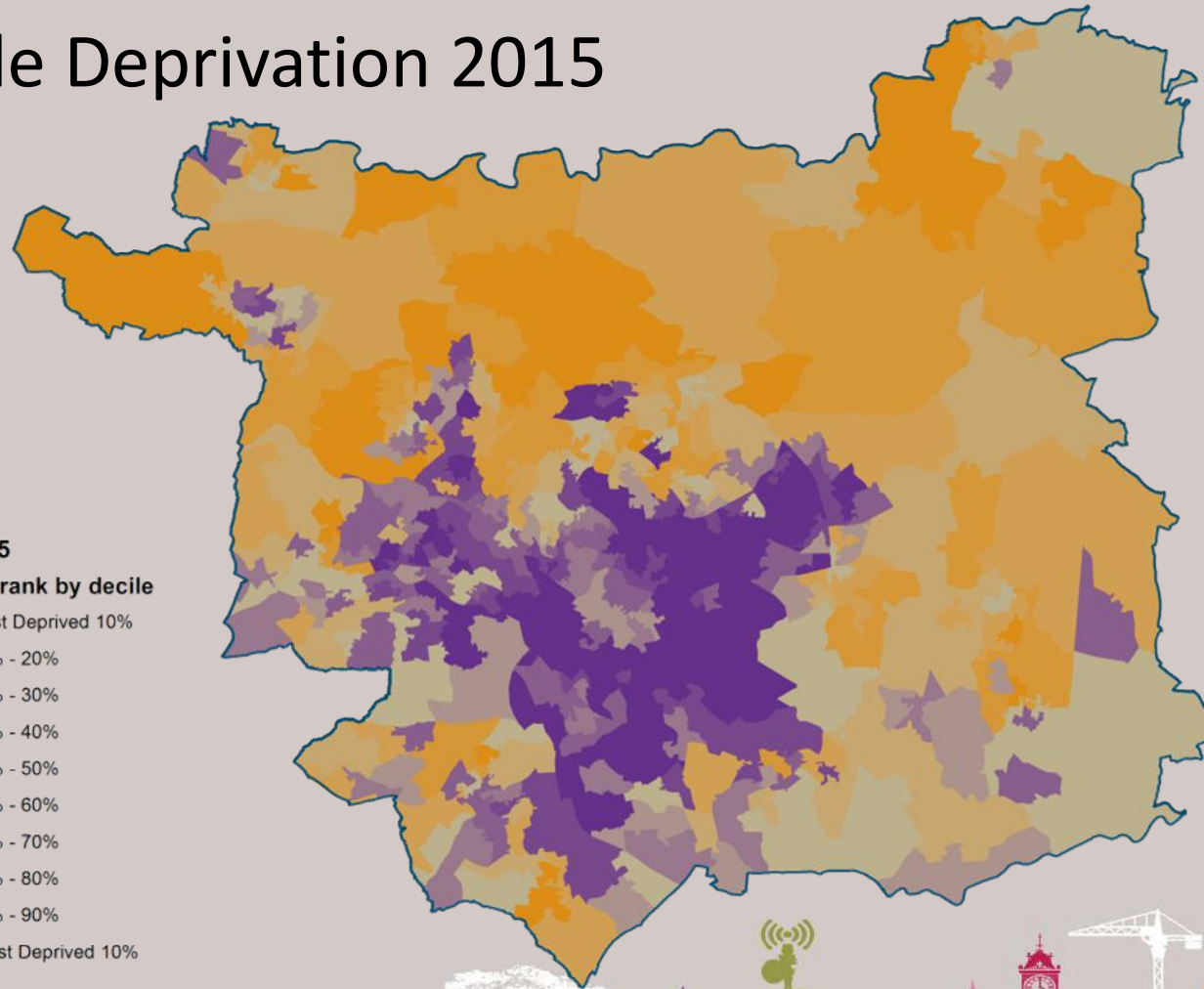
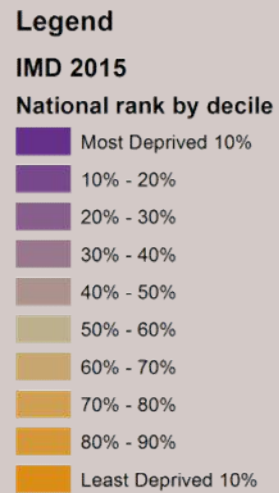
Poverty - a growing issue



- Estimated 4.1 million children in relative poverty across the UK in 2016/17
- In Leeds, 20% of all dependent children under the age of 20 (33,485 children) lived in relative poverty in 2016, in comparison to 17% nationally.
- Across the UK, 67% of children who are in poverty were from a household where at least one person was in work in 2016/2017 .



Index of Multiple Deprivation 2015



Only one question

What is it like to be a child or young person growing up in Leeds...

and how do we make it better?



5

Five outcomes

Conditions of well-being we want for all our children and young people

All children and young people:

1. are safe from harm
2. do well at all levels of learning and have skills for life
3. enjoy healthy life styles
4. have fun growing up
5. are active citizens who feel they have a voice and influence



3

Three obsessions

1. Safely and appropriately reduce the number of children looked after
2. Reduce the number of young people not in education, employment and training
3. Improve achievement, attainment and attendance at school



What if ? Child friendly Leeds?

- Leeds' ambition: to be the best city for children and young people to grow up in – a child friendly city
- Cross party support in Leeds
- Officially launched by HRH The Queen in July 2012





Child friendly city

- Putting the child at the centre of all we do
- Putting the child at the heart of the growth strategy of the city
- Children live in families, families create communities, communities make cities



12 Wishes

Children and young people can make safe journeys and easily travel around the city.

1

Children and young people find the city centre welcoming and safe, with friendly places to go, have fun and play.

2

There are places and spaces to play and things to do, in all areas and open to all.

3

Children and young people can easily find out what they want to know, when they want it and how they want it.

4

Children, young people and adults have a good understanding of children's rights, according to the United Nations Convention on the Rights of the Child.

5

Children and young people are treated fairly and feel respected.

6

Children and young people have the support and information they need to make healthy lifestyle choices.

7

All our learning places identify and address the barriers that prevent children and young people from engaging in and enjoying learning.

8

There are a greater number of better quality jobs, work experience opportunities and good quality careers advice for all.

9

All children and young people have their basic rights met.

10

Children and young people express their views, feel heard and are actively involved in decisions that affect their lives - this is what we mean by 'participation'.

11

Places and spaces where children and young people spend time and play are free of litter and dog fouling.

12

Cross Council Partnerships



CFL is a council wide initiative

Worked with City Centre Management on 'Child Friendly Leeds City Centre competition'

Worked with public health & partners to launch Baby Week Leeds

Child Friendly Neighbourhoods - Play Streets



School Engagement



Child friendly Leeds ambassadors

- Over 900 Child friendly Leeds ambassadors
- All helping to raise the profile of Child friendly Leeds and share what it is about.
- Inspiring others to make Leeds a better place for children and young people







Business Asks: Play your part

Help Leeds' children and young people and families to...

Choose healthy lifestyles:



A baby's first 1001 days will shape their whole life

Leeds baby week is 12-16 September.
Help by hosting, promoting and supporting it.

www.familyinformationleeds.co.uk



Amongst teenagers, rates of depression and anxiety have increased 70% in the past 25 years

Let's make Leeds a city where it's good to talk. How does your organisation promote mental health?

<https://www.mindmate.org.uk/>



Children are consuming three times as much sugar as they should

The Change for Life Sugar Smart campaign helps parents make healthier choices. Download the app/support the campaign.

<https://www.nhs.uk/change4life-beta/campaigns/sugar-smart/home>

Be happy and have fun growing up:



Leeds businesses, cultural venues and sports clubs help vulnerable children feel valued in the city by offering discounts and free tickets

Could you provide incentives and rewards for Leeds children in care and their carers?



Pupils who have four or more contacts with employers are five times less likely to be unemployed after school.

Spend time in Leeds schools to help raise aspirations.

<http://www.leeds.gov.uk/leedspathways/Pages/default.aspx>



Who was your role model? Positive adult influences change lives for vulnerable children

Become an independent visitor - a volunteer who befriends and visits a young person living in residential or foster care.

<http://www.leeds.gov.uk/residents/Pages/Leeds-independent-visitors-scheme.aspx>

So what- is anyone better off?

Obsession	Latest position this week	Change since last week	Change since CYPP start	Percentage change since CYPP start	Progress since CYPP start
Safely reduce the number of children looked after	1251	-2	-191	-13.3	
Reduce the number of young people who are NEET or not KNOWN (new definition)	772	8	New indicator definition	Baseline being established	Trend data available in 2017
Reduce school absence: primary	School	Holidays	-1.7	n/a	
Reduce school absence: secondary	School	Holidays	-2.8	n/a	

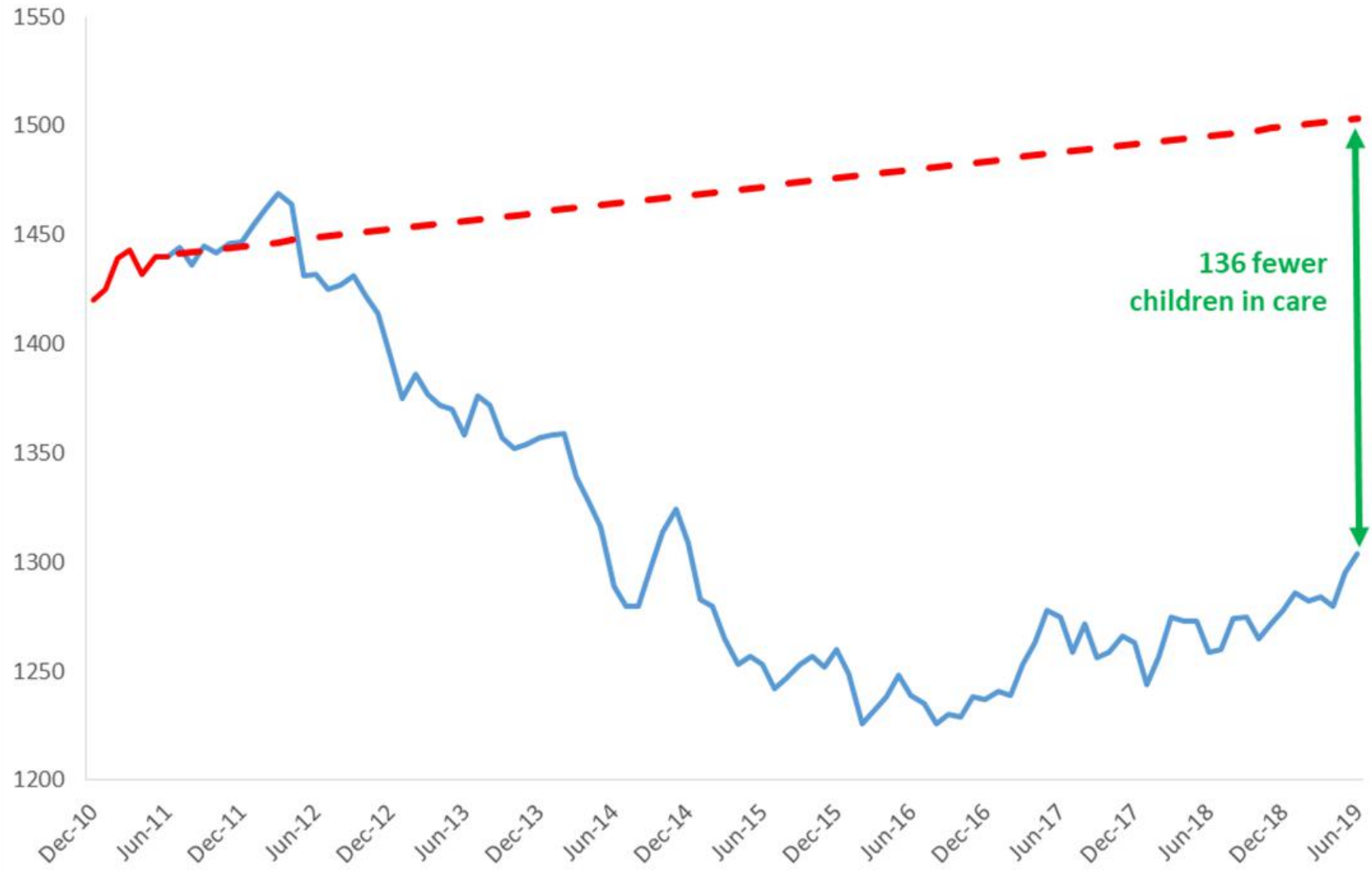
Both the children looked after and NEET data show the position at the start of the week.
 Absence data reports academic year-to-date for 2016/17.
 New NEET definition from September 2016 - baseline being established; Sparkline will be available in January 2017.
 CYPP: Children and Young People's Plan. More information and data are available on the Leeds Observatory: <http://observatory.leeds.gov.uk>.



Produced by the Children's Performance Service



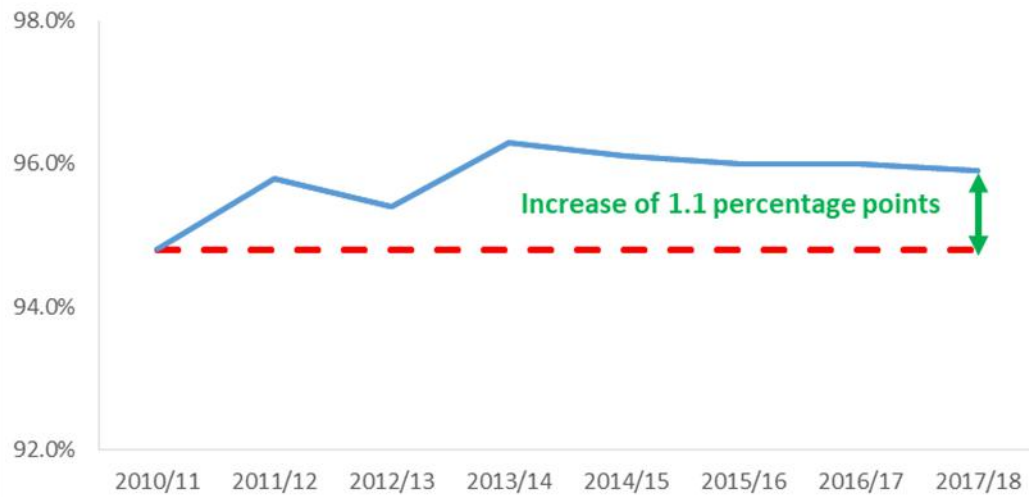
It pays to obsess: reducing the number of children looked after



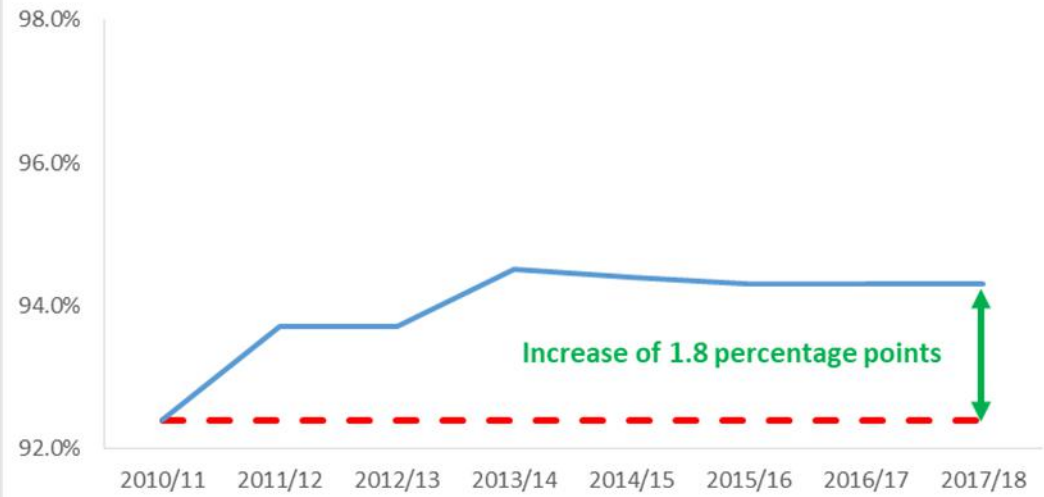
It pays to obsess: reducing the number of NEET and not known young people



It pays to obsess: improving primary school attendance



It pays to obsess: improving secondary school attendance





Thank you for listening

Email: sue.rumbold@leeds.gov.uk



@suerumbold

