



Read this  
report online



# Shaping a Strong Social Europe fit for Families of Today

2022

ANNUAL  
REPORT

Date of publication: May 2023  
© COFACE Families Europe

Editor: Bettina Guigui  
Graphic design: 3milesup.org



Co-funded by  
the European Union

Co-funded by the European Union. Views and opinions expressed are however those of the author(s) only and do not necessarily reflect those of the European Union or the European Commission. Neither the European Union nor the granting authority can be held responsible for them.



# TABLE OF CONTENTS

---

## **Introduction**

---

Preliminary words	4
About us	5
Key activities	7
2022 Highlights	8

## **European Family Lab**

---

COFACE TV channel collecting videos on policy & practice	12
L.I.N.K.: An education and training programme for lifelong learning on social rights from a whole-family perspective	12
Families2030 peer exchange group	12
European Observatory on Family Policy	12
Breakfast Byte webinars on family supports	13

## **Spotlight on L.I.N.K**

---

COFACE's first education hub: The L.I.N.K. programme	14
--	----

## **Policy and Advocacy**

---

Assessment of the EU work-life balance directive transposition	15
COFACE Disability policy brief on children with disabilities	15

## **Growing international community of practice**

---

Key public networking events	16
Online communities	18
Campaign: Family is Teamwork	19

## **Building bridges**

---

EU projects in the spotlight	20
EU projects overview	22
Partners	23

## **The Network**

---

Members	25
---------	----

## **Behind the scenes**

---

26
----



# INTRODUCTION

---

## Preliminary words

Dear readers,

Welcome to the 2022 annual report of COFACE Families Europe. In this report we highlight our activities, efforts and achievements towards creating a better and more inclusive society for families across Europe. Our mission has been to address the social challenges faced by families and to develop policies and programs that support their well-being and success. In 2022, we navigated through unprecedented times marked by the war in Ukraine, recovery after COVID 19 lockdowns, economic and social uncertainty, but COFACE persevered and continued to deliver quality work.

Throughout the year and with the ambition to shape a strong social Europe fit for families, we have worked closely with various stakeholders, policymakers, researchers to mainstream the family dimension and to promote family-friendly policies and practices. We had a strong voice in the European Care Strategy and the Child Guarantee with a focus on family carers. With our assessment report on the transposition of the Work-Life Balance directive, we triggered discussions at national level and encouraged our members to advocate and strive for national regulations that go beyond the minimum standards of the EU directive and help ensure that families can balance work and caregiving responsibilities. A strong social Europe must promote social inclusion and diversity, recognising the unique needs of different families. In 2022, we advocated for policies that support large families and single parent families, as well as families with disabilities or special needs. "Family is teamwork" is our motto and we call on all mothers, fathers, children, and all family members to play our #Familyteamwork BINGO that we have co-created with Men Engage Eastern Europe & Central Asia, an UNFPA-led platform, to get families reflecting on how to better share the care.

Thanks to the dedication of the COFACE team and its great network, we were also able to take major steps to further develop our Family lab! We expanded it in the field of education and in partnership with the Center for family studies of Odisee University, we reinforced the research branch and created the European Observatory of Family Policy. I want to thank everyone who contributed to the success of our organisation over the past year, especially our COFACE team and our COFACE members.

Our commitment to social responsibility has been a driving force behind our efforts. I am confident that with our continued effort and determination, we can build a better Europe fit for families, where everyone has opportunities to thrive.

Annemie Drieskens  
President of COFACE Families Europe



## About us

Founded in 1958 and with 50+ member organisations in 23 European countries, COFACE Families Europe is a network which represents millions of families, volunteers, and professionals.

Our areas of work include social and family policy, work-life balance, education, disability rights, gender equality, child rights, migration, consumer issues as well as the impact of technological developments on families.

COFACE Families Europe advocates for policies of non-discrimination and equal opportunities between persons and between family forms, and specifically supports policies aimed at increasing equality between women and men, with a special focus on reconciliation between work, care and family life.

## COFACE Families Europe aims to achieve several positive overarching outcomes for families and society:

Work Life balance and family-friendly workplaces

Gender equal and caring economy

Social inclusion and poverty prevention

Inclusive education and societies

Digital citizenship and harnessing the potential of technology

Independent living for all, family carers and persons with disabilities

Child rights and family well-being

Financial inclusion and an economy that serves society and the planet

## MISSION

COFACE - FAMILIES EUROPE is a network promoting the well-being, health and security of families and their members in a changing society and serves as a trusted entity for family mainstreaming and for the voice/needs of families in the EU and beyond.

## VALUES

In a spirit of pluralism, working in the name of all types of families, COFACE Families Europe is rooted in a set of six core values:

- **Non-discrimination.** COFACE Families Europe recognises all family forms.
- **Equal opportunities.** COFACE-Families Europe believes equality between women and men is a cornerstone for the reconciliation of family and professional life.
- **Respect of human rights.** COFACE-Families Europe seeks to advance the rights of families and their members to a decent quality of life.
- **Empowerment.** COFACE-Families Europe aims to give a voice to all family members as citizens, consumers and workers.
- **Social inclusion.** COFACE-Families Europe advocates for the shaping of policies to tackle poverty and social exclusion of families and their members.
- **Solidarity.** COFACE-Families Europe promotes intergenerational solidarity between family members.

## VISION

COFACE Families Europe works towards a family friendly environment, enabling all families and their members to benefit from sufficient financial resources, available quality services and adequate time arrangements in order to live, be fully included in the community, and enjoy their family life in dignity and harmony.

COFACE views the family as a multi-faceted, dynamic and intergenerational entity coming in different shapes and sizes. We advocate for a systemic two-generation approach in policymaking to support families and children in different life transitions from birth to old age.



---

## Key activities

- Represent →** Representing COFACE member organisations towards the European and international institutions (UN, OECD, Council of Europe), and towards other organisations operating at European level (EU agencies and stakeholder groups, NGO alliances, forums, platforms).
- Advocate →** Carrying out advocacy campaigns for families and family organisations wherever the interests of families and their members are at stake.
- Coordinate →** Coordinating and facilitating projects, programmes, activities and initiatives of member organisations, bringing a European dimension to their local initiatives to drive change for families.
- Monitor →** Closely following EU and international initiatives, assessing the negative and positive impacts for families. Assess emerging family trends across Europe through studies in various fields and making the link with EU/international initiatives.
- Network →** Establishing networking systems for the continuing exchange of information and actions with member organisations on matters arising within the European Union, as well as reaching out to individuals who support COFACE's mission.
- Initiate →** Developing new research, projects, conferences, seminars, trainings and study days, and putting in motion programmes of action at European level, in partnership with other organisations.
- Educate →** Creating a wide range of tools to support life-long learning of families and professionals.
- Research →** Collecting data through different channels to better understand policies and practices to support families of today.



## 2022 highlights

### JANUARY

**Breakfast byte webinar on the everyday challenges and solutions for single parents**, co-hosted with the Single Parents Foundation in Hungary.

COFACE develops **a handbook for professionals to support and empower parents**, in the Skills4Parents project funded under Erasmus+.

**Opinion piece by Google** on the collective responsibility to protect children online.

### MARCH

**For International Women's Rights Day, COFACE releases a media statement** focusing on closing the gender care gap.

Open Letter: **COFACE stands with Ukraine**.

**Breakfast byte webinar on Incluso, a resource and training centre for professional staff in non-formal education**, co-hosted with APEMH, Luxembourg.

**European Expert meeting in Ljubljana on challenges for large families of today**, co-hosted with Family Initiative, Slovenia.

### FEBRUARY

**Breakfast byte webinar on energy prices and the impact on families**, co-hosted with Isadora Duncan in Spain

COFACE releases **a media statement for Safer Internet Day** on supporting children's digital citizenship.

**COFACE takes part in the ESAs high-level conference** on financial education and literacy.

### APRIL

**Breakfast byte webinar on cross-border recognition of familial ties**, co-hosted with NELFA.

**Online expert meeting with members on work-life balance**, to assess the impact of the EU work-life balance directive.

**Meeting with Better Internet for Kids** (youth) to co-create a toolkit with children on digital citizenship.





## MAY

The **#FamilyTeamwork** campaign is **co-launched** with Men Engage Eastern Europe & Central Asia

**Breakfast byte webinar on mental health and social cohesion through the example of Time Banks**, co-hosted with Salud y Familia, Spain.

**Annual meeting of the COFACE Disability platform** for the rights of persons with disabilities and their families.

## JULY

COFACE speaks at **Czech Presidency Conference** on the **European Child Guarantee**

COFACE publishes Opinion piece titled **"Digital Euro = Digital Cash ?"**

## JUNE

**Webinar co-hosted with UNAPEI and APF France Handicap** to bring SHIFT practices to French families and professionals.

**European expert meeting in Amsterdam on family-friendly workplaces**, co-hosted with Pro Parents Netherlands.

Launch of **COFACE online Members' Forum** for real-time exchanges with the network.

## AUGUST

Finalisation of the **Skills4Parents online hub**: [skills4parents.eu](https://skills4parents.eu)



## 2022 highlights

### SEPTEMBER

**COFACE publishes a Media statement** in response to the launch of the **European Care Strategy**

**European expert meeting on the Child Guarantee in Berlin**, co-hosted with German social affairs ministry, bringing together **25 ministry representatives** from **15 countries**.

**Breakfast byte webinar on quality assurance in ECEC**, co-hosted with AGF Germany.

### NOVEMBER

**Final conference of the DigiGen Horizon 2020 research project** on the impact of digital transformations on children and youth.

**Co-launch with KMOP (Greece) of the L.I.N.K. programme** and its first e-learning course: **School Bullying Management- Effective Skills for Educators**.

**Breakfast byte webinar on inclusive labour markets for persons with disabilities** co-hosted with Fundação Liga, Portugal.

### OCTOBER

Publication of COFACE assessment of **EU Work-life balance directive transposition**.

**European expert meeting in Prague** on building effective policies for single parent families, co-hosted with Women4Women.

**New European Observatory on Family Policy co-launched** with Odisee. Data collection on family policies kicks off in **five countries**.

### DECEMBER

**Launch of COFACE Disability Policy Brief** on children with disabilities.

**Breakfast byte webinar on child safety in the home**, co-hosted with Gezinsbond, Belgium.

**Opinion piece by Mattel** titled "How inclusive toys can help to represent and raise awareness of disabilities?"



## 2022 highlights

**1**

European Parliament interest group on solidarity between generations

**51.000**

website page views

**1**

Online hub for parents and professionals

**2**

European research projects

**10**

Capacity-buildings on EU policy

**11**

Newsletter issues

**5**

Networking public events

**9.000+**

followers on social media

**1**

Policy brief on children with disabilities

**1**

COFACE TV channel with 8 new videos

**7**

Media releases

**5**

Active hashtag campaigns

**1**

Assessment of the EU work-life balance directive

**4**

Expert meeting reports

**20+**

Responses to EU consultations

**17.291**

website users

**1**

Online course on School Bullying Management

**8**

Webinars on family supports

**10+**

Joint policy statements

**1**

Europe-wide campaign

**3**

Online expert meetings

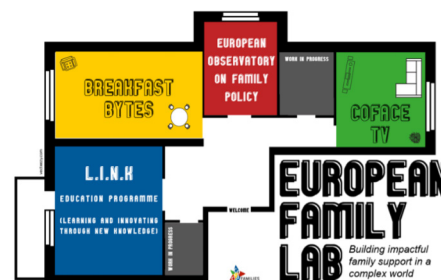
**1**

New Observatory on Family Policy



# EUROPEAN FAMILY LAB

This European Family Lab, which we have been busy developing since 2020, serves as an innovation incubator for ideas and cross-country knowledge transfer to help family professionals deliver the best possible supports for families and children. Major steps were taken in 2022 to further develop the Family Lab in cooperation with members and partners.



## COFACE TV channel collecting videos on policy & practice

A room of the Lab is dedicated to COFACE TV, a YouTube channel collecting different types of videos on family policy and practice, functioning as a resource to find expertise, people and organisations to connect with. The new videos available in COFACE TV are especially recordings of the breakfast byte webinar expert talks as well as the S.H.I.F.T. France webinar.

## Families2030 peer exchange group

Coordinated by COFACE, this group of policymakers from 15+ ministries of social affairs met for the first time in Berlin end of September 2022, co-hosted by COFACE and the Association of German Family organisations (AGF). This started with an expert meeting on the EU Child Guarantee (open also to German stakeholders) and a networking meeting the day after to kick off peer exchanges on key topics: gaps in data on the needs of children and their families; key tools available or needed to support family policies, and EU research projects to boost family policies. This group will be invited to convene around early October every year, with COFACE as facilitator of these exchanges.

## L.I.N.K.: An education and training programme for lifelong learning on social rights from a whole-family perspective

The goal of L.I.N.K. (a joint programme of KMOP Education Hub and COFACE) as modern education centre is to develop courses for three different target groups: families, professionals, organisations. The courses may follow asynchronous, synchronous, and blended e-learning methods. The first L.I.N.K. e-learning tool is a 3-hour course on "School bullying management: effective skills for educators", for any education professional working with children and youth in learning environments on a daily basis.

## European Observatory on Family Policy

The European Observatory on Family Policy is a joint research programme of COFACE Families Europe and the Center for Family Studies of Odisee University of Applied Sciences. It aims to serve as a platform for the observation, analysis, and dissemination of evidence on family policy and other social concerns directly relevant to family well-being across the European Union.



## Breakfast Byte webinars on family supports

A room dedicated to the breakfast byte webinars focusing on NGO family supports, with 8 new breakfast bytes in 2022 attended by 25-40 participants on average, and focusing on a wide range of areas where families need support such as in the field of energy poverty, single parenthood, work-life balance, early childhood education and care, inclusive labour markets for persons with disabilities, and child safety in the home.

### 2023 PROGRAMME OVERVIEW

- JANUARY** A Closer Look at Single Parenting – everyday challenges and solutions. By Single Parents Foundation in Hungary.
- FEBRUARY** #FacturasImposibles – A campaign calling for an energy system that puts families before profit. By Isadora Duncan, Spain and Climate Justice and Energy Campaigner, Friends of the Earth Europe.
- MARCH** Incluso, training centre for inclusive education. By APEMH, Luxembourg.
- APRIL** Cross-border recognition of familial ties within the European Union. By NELFA, Europe.
- MAY** Sharing Time to Improve Mental Health and Social Cohesion: The Example of Time Banks. By Associació Salut i Família, Spain
- OCTOBER** Quality assurance in early childhood education and care services. By AGF, Germany.
- NOVEMBER** Inclusive labour markets: a support service for persons with disabilities. By Fundação LIGA, Portugal.
- DECEMBER** The Giant's House – Child Safety and prevention on tour. By Gezinsbond, Belgium.

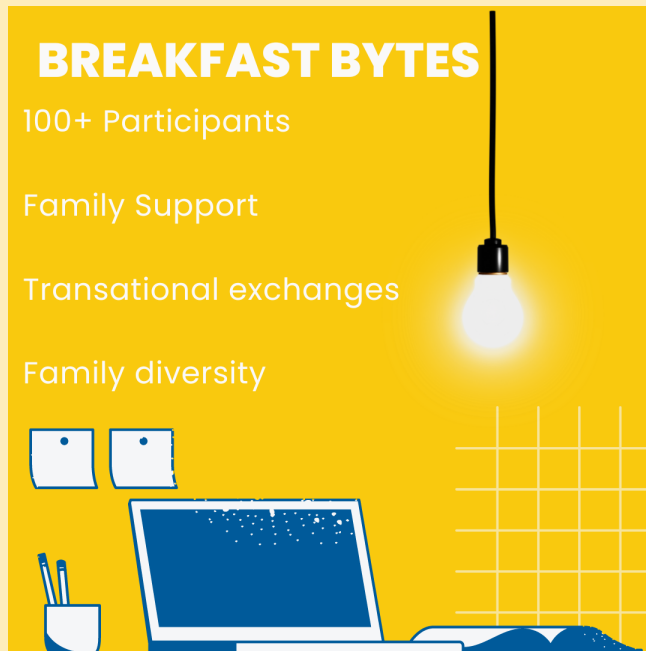
## BREAKFAST BYTES

100+ Participants

Family Support

Transnational exchanges

Family diversity



### MISSED THEM?

You can watch the talks of the 2022 Breakfast Bytes on our COFACE TV channel.



# SPOTLIGHT ON L.I.N.K.

## COFACE's first education hub: The L.I.N.K. programme

In 2022, COFACE Families Europe and its Greek member KMOP, officially launched their L.I.N.K. programme.

**L.I.N.K.** (Learning and Innovating through New Knowledge) reflects the joint goal of COFACE and KMOP to create a modern educational centre aiming at supporting education and lifelong learning for a range of challenges, in which families, professionals and modern societies in general need support and continuous guidance. L.I.N.K. aims to address key social challenges of our time through educational tools and courses that are based on the values of human rights, non-discrimination, gender equality, social inclusion, diversity, empowerment, and intergenerational solidarity. It is designed to contribute to addressing important challenges that modern societies face.

The overall goal of L.I.N.K. is to develop learning courses that utilise asynchronous, synchronous, and blended e-learning methods throughout all the series of educational modules. These educational modules provide learners with new skills and solutions to societal challenges affecting families of today, while also supporting the achievement of the **Sustainable Development Goals and the European Pillar of Social Rights**.

On **#WorldChildrensDay**, COFACE and KMOP were happy to kick off the very first free e-learning course of the L.I.N.K. programme which equips educators with effective skills to prevent and tackle school bullying **from a whole-community perspective**. This **e-learning course** (available in English and Greek) offers insights into the causes, expression, and effects of bullying, as well as clear universal guidelines and methods on how to prevent and tackle bullying in school communities.

It follows an interactive approach to ensure each thematic unit is fully understood and can be implemented successfully. Participants receive clear and detailed instructions on how to apply key methods and techniques to gain the ability to deal with bullying behaviour, contribute to the development of a

healthy school environment and consequently help children, families, and the wider society where we all live. Upon completion of the course, participants receive a certificate of attendance from KMOP Education Hub and COFACE Families Europe.

**The trainer of the course, Dr. Antonia Torrens**, is not only the General Manager of KMOP and Vice President of COFACE Families Europe but also an educational psychologist. She is the founder and coordinator of the "Live Without Bullying" programme, an innovative programme aiming to prevent school and cyber bullying in Greece.

You can access the course on COFACE's website from your computer here: <https://coface-eu.org/l-i-n-k/>.



**online course**

### School Bullying Management - Effective Skills for Educators

Register for free at

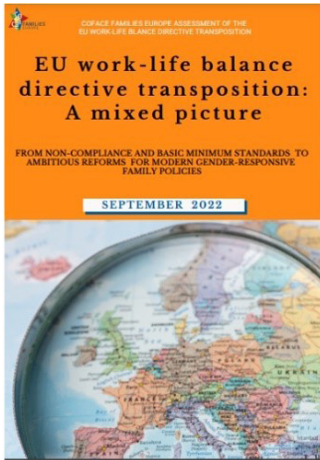
[education-hub.kmop.org](https://education-hub.kmop.org)





# POLICY AND ADVOCACY

## Assessment of the EU work-life balance directive transposition



The deadline for the transposition of the directive was 2nd August 2022, and the assessment of COFACE focused on 10 countries (Belgium, Croatia, Finland, France, Germany, Italy, Lithuania, Hungary, Poland, Spain) as a representative sample of countries. The assessment kicked off with an online expert meeting in April 2022 together with 10+ experts in the COFACE network, where various dimensions of the national transposition process were examined: acknowledgement of family diversity (transposition of "equivalent second parent"), adequacy of leave payments (which are still very low in many EU countries), eligibility of these new social rights for self-employed workers, full application of non-transferability of parental leave (making it an individual right for mothers and fathers). The result was a mixed picture from non-compliance and minimum standards to ambitious reforms. COFACE members who engaged in the assessment exercise were able to regularly exchange on the transposition process in their respective countries, advise their governments by providing different country examples of incentives for take-up of leaves by men. The full assessment was published in October 2022, making clear links with the European Care Strategy published in September 2022. At the request of different organisations, the report was presented at different meetings of civil society and think tanks like the European Policy Centre, as well as being spread through newsletters of COFACE members and across COFACE social media channels.

## COFACE Disability policy brief on children with disabilities



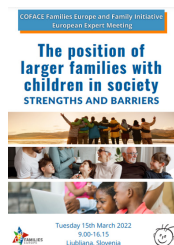
This brief analyses children with disabilities and their families at the intersection of several EU social policy fields. As often, silo thinking in policy making puts these children and their families at risk of falling through the cracks. While considerable efforts are being made by the EU institutions to integrate intersectional thinking, children with disabilities are still not sufficiently covered in child focused policies nor in disability policies. The policy brief therefore aims to launch a broader reflection on how to deepen the interaction between disability and age in policy making. It starts with clarifications, describing the whole-family lens of the 2030 COFACE Child Compass as well as key references to children in international and EU human rights law. Then follows the analysis of four selected EU policy frameworks, giving an overview of measures which specifically include or target children with disabilities. This leads into a reflection on interrelated well-being of children and their families, highlighting the need to consider children with disabilities within their family and community context to ensure two-generation supports are put in place for positive and sustainable outcomes. The concluding section reflects on the results of the analysis and on the steps needed to address gaps at the intersections of these EU social policies.



# GROWING INTERNATIONAL COMMUNITY OF PRACTICE

## Key public networking events

### MARCH 2022



Using the COFACE Child Compass as a starting point, this European expert meeting co-hosted with Family Initiative in Ljubljana, Slovenia, focused on the features of large families and the challenges they experience in Europe today, taking stock of the situation in different countries and collecting good practices. The reflections were based on the premise that all children must have equal opportunities and be treated equally regardless of their family settings, and modern 21st-century family support systems should be able to factor in this diversity of needs without discrimination. This European expert meeting was held in hybrid format (offline/online) for COFACE members, local participants in Slovenia, and EU stakeholders working on similar goals. The key findings are contained in a meeting report.

### JUNE 2022



A European expert meeting was co-hosted with Pro Parents Netherlands on family-friendly workplaces. Working families around the globe were dramatically impacted by the changes COVID-19 brought. Increasing anxieties around job security and mounting home-schooling demands have taken the small safety net around families away. We are still in the phase of COVID recovery, gearing up for the next normal in work and life. There is an opportunity to build back better and coordinate a societal shift both at home and in the workplace. We need to redefine the future of work and how we envision care and work. How care responsibilities are organised to ensure that people with care responsibilities (mostly women and or mothers, but also family members who take care of elderly relatives or relatives with disabilities) are properly represented in the workplace. The key findings are contained in a meeting report and a video of the event is available on the COFACE website.

### SEPTEMBER 2022



A European expert meeting was co-organised in Berlin with the Association of German Family organisations, bringing together ministry civil servants from 15+ social affairs ministries. These policymakers came together for peer exchanges to examine more closely the Child Guarantee (CG) in four countries: Germany, Czechia, Spain and Sweden. Key takeaways of the meeting include: the need for specific sub-targets for different CG target groups; the importance of national action plans as tools for policy-makers to bring a more holistic picture and multisectoral approach to address the needs of children; the development of sub-national governance tools to ensure the CG process reaches the local level; the use of different EU funds including the Technical Support Instrument to support implementation of the CG; the need to review existing social policy laws (on welfare, family, employment) to ensure that enabling frameworks fully support implementation of the CG. The key findings are contained in a meeting report.



## Key public networking events

### OCTOBER 2022



A European expert meeting on single parent families was co-organised in Prague, Czechia, together with Women4Women Czechia. The discussions were based on recent developments under the EU Child Guarantee national action plans, with a spotlight on single parents in the Czech national action plan, as well as a recent European Parliament report on single parent families, and study sessions on different areas where single parents need enhanced support such as housing, energy, mental health, early childhood education and care. Many challenges were highlighted during the expert meeting: inadequate access to childcare, lack of child support enforcement, lack of work-life reconciliation measures, lack of adequate housing for single parents with financial consequences linked to the energy crisis, lack of clear definitions of single parenthood, poorly designed policies for family diversity, to mention some challenges. Many solutions were also proposed, which are highlighted in the report of the meeting.

### NOVEMBER 2022



The DigiGen conference organised in Brussels brought together three years of research into how technological transformation is affecting children and young people's everyday lives with a final conference in Brussels. The conference brought DigiGen findings and corresponding policy recommendations to EU policymakers, technology industry, and civil society, highlighting that we must look at the digital transition through a social lens. For all children to be able to reap the rewards of the digital era, we must ensure that:

- all children and young people have access to digital devices, connectivity, and to a digital environment that enables their active participation as digital citizens.
- all children and young people are supported in developing digital competences (digital skills, media literacy, and social competences).

DigiGen has further exposed the digital divides that are preventing many children and young people across Europe from participating in the digital environment. We welcome and support Member States in realising the recommendations of the EU Child Guarantee which aims to ensure that all children in Europe have access to essential services (including digital access and competences).



## Online communities

COFACE ensured an ongoing society watchdog function to raise awareness about new trends and emerging challenges for families at EU and national level, aiming to foster transfer of knowledge across countries, sections and levels.

COFACE does so to develop and disseminate innovative policy and practices as well as to give a voice to challenges and needs of all types of families in the EU and inspire one another to tackle current and future issues.

This involves building various online information and advocacy campaigns to disseminate COFACE/EU activities strategically to local communities in Europe and beyond and at the same time spread grassroots information to the EU level.

The main communication channels helped in achieving our objectives. The state-of-the art multi-lingual website stays a central European hub on family matters.

Social media are an integral part of our dissemination strategy. Through our activities on LinkedIn, Facebook, Twitter and Instagram we have started building various communities of EU and family professionals from different backgrounds, individuals interested in family matters and partnerships across sectors, countries, languages and political beliefs.

Equally the Families Corner newsletter gathers all relevant aspects about COFACE, its members, the EU and beyond which are sent out monthly to 4000+ people.



In 2022, COFACE published 11 Families Corner newsletters and connected you all by sharing key information and news affecting families across Europe and beyond through four sections:

- ★ **You&The EU:** European initiatives which affect our daily lives directly or indirectly.
- ★ **Creative Hub:** Highlights about the great work of the COFACE members and partners to support the rights of families.
- ★ **Discuss&Debate:** Opinions from inside and outside COFACE to show the pluralism of views in our inclusive and democratic European societies.
- ★ **Timeout:** A section with elements which will make you laugh and relax. Fun and smiles are an integral part of the Families Corner experience.

**Become part of our community by following us on social media and signing up to our newsletter: <http://tinyurl.com/cofacenws>.**

- |  |   |
|--|---|
| 1 COFACE TV (Youtube channel)                    | 8 opinion pieces                                |
| 9 videos   | 8 webinars                                      |
| 9k+ followers across four social media platforms | 5 campaigns                                     |
| 11 Families Corner newsletters                   | 1 brand new member's area on the COFACE website |
| 55 published articles                            | 1 multilingual website                          |



## Campaign: Family is Teamwork

 **Important Reminder**

Family is teamwork.

Okay!



We build political momentum on family issues (family diversity, gender stereotypes, sexual and reproductive rights, cyber-bullying, challenges of family carers, family reunification of refugees) and on EU matters (European Pillar of Social Rights, Work-Life Balance, Sustainable Development Goals, EU Strategy on the rights of persons with disabilities, the EU Child Guarantee and more). We use international days (women, families, parents, children, disability and refugees) and communication partnerships (with NGOs, EU agencies, research) for greater multiplier effects and involvement of wider communities in our campaigns.

To celebrate the International Day of Families in 2022, COFACE launched the #FamilyTeamWork campaign in collaboration with Men Engage Eastern Europe & Central Asia, a UNFPA-led platform.

The campaign seeks to highlight the importance of family as a team, regardless of its composition. Families are made up of unique individuals, each with their own strengths and personalities that contribute to the family's overall well-being. We encourage parents and children, as well as all members of society, to engage in conversations about sharing care and household tasks, and to work together to break down stereotypical gender roles within families. By doing so, families can become stronger and more connected, leading to happier and healthier lives for all involved.

In order to get all families and their family members, including children, reflecting and talking on the need to share unpaid care and domestic work, COFACE developed a series of fun and engaging resources to get the conversation going on family teamwork for the benefit of all, transmitting these values to new generations. The signature resource of the campaign was in fact, a set of bingo cards with different care and household tasks, and these were built in consultation with the wide diversity of families in the COFACE network

(e.g. to include the realities of family carers, single parent families, blended families, large families, rainbow families), with different target groups in mind (including children) and different themes (e.g. on mental health and self-care). Like every team, it is important that every family member feels involved and knows what is expected at home and beyond. This is why we have developed family planners to complement our bingo cards, enabling families to establish priorities together and collaborate to eliminate unequal task-sharing.



[Download all bingo cards here.](#)



[Download the planners here.](#)

COFACE members and allies greatly contributed from the very first stage in ensuring that the campaign would be inclusive of many and varied voices as well as lived experience of families. They equally acted as strong amplifiers throughout the launch by sharing the campaign, translating and producing #Familyteamwork content at their national level, including on their respective communication channels. A big thank you to all!



# BUILDING BRIDGES

## EU Projects in the spotlight

### THE IMPACT OF TECHNOLOGICAL TRANSFORMATIONS ON THE DIGITAL GENERATION



COFACE Families Europe continued to engage in the work of the DigiGen Horizon 2020 research project to support the dissemination of research results into policy and practice across Europe, through a number of meetings organisations with children and youth, and a final conference organised in Brussels for a wide range of stakeholders.

The DigiGen (Digital Generation) project developed significant knowledge about how children and young people use and are affected by the technological transformations in their everyday lives. The research has identified two main areas where interventions can support the development of children and young people’s resilience and mitigate vulnerabilities introduced or enhanced by the digital environment:

- ★ Access to digital devices, connectivity, and to a digital environment that enables their active participation as digital citizens.
- ★ Competency such as the development of digital and social skills, digital confidence, and interest. The policy recommendations for developing digital access and competency are directed at regulation, industry self-regulation, and awareness raising.

**i** More information: [www.digigen.eu](http://www.digigen.eu)

### IMPROVING THE PERSONAL GROWTH, COMMUNICATION AND PARENTING SKILLS OF PARENTS AS WELL AS THE SKILLS OF PROFESSIONALS (ERASMUS+)



With modern technologies developing fast, many parents need more support, guidance, and mentoring to address the everyday challenges when raising their children. With years of experience in supporting learning parents, the Skills4Parents project partners (from Belgium, Italy, Croatia, Netherlands and Cyprus) agreed on recognising that parents often struggle with common issues that are present in the everyday lives of families.

The solution to this is in “upskilling” parents, which leads to their better understanding of children’s needs and of their mutual relationship. To help parents develop certain specific skills, partners of the Skills4Parents project worked on creating educational material, including:

- ★ A Learning Guide for Parents, which contains learning packages to boost parenting skills in five areas: Communication, Empowerment, Mediation, Problem-Solving, and Digital.
- ★ A Handbook for professionals, which contains a learning plan for each of the 5 packages to use as an example, as well as key tips on how to integrate the Learning Guide resources in existing training programmes.
- ★ A multilingual online Hub collecting the five individual learning packages, the different Skills4parents resources and more.

**i** More information: [skills4parents.eu](http://skills4parents.eu)



## EU Projects in the spotlight

### RISKS, RESOURCES AND INEQUALITIES: INCREASING RESILIENCE IN EUROPEAN FAMILIES



Will a better understanding of families lead to improved welfare states? That's the hope of a big new Horizon Europe research project, rEUsilience, in six European countries, coordinated

by sociologist Rense Nieuwenhuis at SOFI of Stockholm University, together with Mary Daly from the Department of Social Policy and Intervention at Oxford University, and the universities of Barcelona, KULeuven, Warsaw and Zagreb. The context is one of fast-paced changes in labour markets and income security to which families have to act as key responsive entities, cushioning potentially negative impacts and enabling/disabling risk-taking and change. In focusing especially on families that may not be able to respond and understanding the conditions that make for familial resilience more generally, the project answers two research questions: What challenges and difficulties are created or exacerbated for families by labour markets in the 'new world of work and how do families try to overcome these? How do social policies contribute to familial resilience, especially in terms of the extent to which they are inclusive, flexible, and complementary? As impact partner, COFACE Families Europe will be following and contributing to the research over the three years of the project (2022-2025), as well as analysing the data from a policy and practice perspective, to ensure it feeds into key European social and employment policy frameworks under the European Pillar of Social Rights Action Plan.

**i** More information: [www.reusilience.eu](http://www.reusilience.eu)



## EU projects

### FINISHED PROJECTS

- ★ WAF Project: Work Autonomy, Flexibility and Work Life Balance
- ★ Families And Societies: Studying diversity of family forms, relationships, and life courses in Europe
- ★ ENABLE: European Network Against Bullying in Learning and Leisure Environments
- ★ Delete Cyberbullying: European Awareness raising campaign on Cyberbullying
- ★ SIP-Bench III: Benchmarking of parental control tools for the online protection of children
- ★ Female breadwinner families in Europe: on the impact of earnings and distribution power in families
- ★ POSCON: Positive Online Content and Services for Children in Europe
- ★ EU CONVINCENCE – EU COmmon Values INCLUSIVE Education – Create an alliance of schools for inclusion
- ★ Digital Citizenship Education (with the Council of Europe)
- ★ Ad-PHS: Advancing Personal and Household Services
- ★ TRIPS – TRANsport Innovation for disabled People needs Satisfaction
- ★ Skills4Parents – Empowering families and professionals for positive parenting
- ★ DigiGen – The impact of technological transformations on the Digital Generation
- ★ Children Online – Research and Evidence (CORE)
- ★ euCONSENT – Trust services for Children in Europe

- ★ European Platform for Investing in Children
- ★ EuroFam-Net. The pan-European Family Support Research Network

### CURRENT PROJECTS

- ★ rEUsilience – Risks, Resources and Inequalities: Increasing Resilience in European Families
- ★ Paths2Include – European Labour markets under pressure: New knowledge on pathways to include persons in vulnerable situations
- ★ Transnational family dynamics in Europe
- ★ Platforming Families: Tracing digital transformations in everyday life across generations (PlatFAMs)
- ★ ALFA – Aligning Law with Family Arrangements: Non-traditional Families' Contribution to Addressing Italy's Demographic Crisis
- ★ Transeuroworks – Transforming European work and social protection: a New proactive welfare state fit for the future world of work
- ★ UNIC-towards user-centred funding models for long-term care
- ★ CAPABLE Enhancing Capabilities? Rethinking Work-life Policies and their Impact from a New Perspective.
- ★ Euroship – Closing gaps in social citizenship
- ★ More Years Better Lives - on the challenges of demographic change
- ★ EUSOCIALCIT – The state and future of social rights in Europe



## Partners

An important role of COFACE Families Europe is to function as a bridge between civil society organisations, research bodies and public authorities. We build on the experience of our member organisations and we listen to the needs of families at grassroots level and channel these to policy and decision makers at EU level, daily ensuring links between EU and local realities. In addition to consulting our member organisations, we regularly link up to other networks to exchange best practices, learn about other ways of solving societal problems, and grow our network, on which we can rely for our events, projects and advocacy work. We are actively engaged in a number of official European Commission stakeholder groups, to which we bring our knowledge about the needs of families across Europe. This is also the case with key Members of European Parliament across different political parties. Finally, we also work closely with EU agencies and international bodies.

### EUROPEAN PARLIAMENT

- ★ Interest group on Solidarity between Generations
- ★ Disability Rights Intergroup
- ★ Child Rights Intergroup
- ★ Interest Group on Carers
- ★ Committees FEMM, EMPL

### EU ADVISORY GROUPS

- ★ Disability Platform (European Commission - EMPL)
- ★ Alliance to Better Protect Minors Online (European Commission - CNECT)
- ★ Consultative Commission on Industrial Change (EESC)

### EU AGENCIES

- ★ European Foundation for the Improvement of Living and Working Conditions (EUROFOUND)
- ★ European Institute for Gender Equality (EIGE)
- ★ Fundamental Rights Agency (FRA)
- ★ European Banking Authority (EBA)
- ★ European Insurance and Occupational Pensions Authority (EIOPA)

### INTERNATIONAL AGENCIES

- ★ United Nations (special consultative status at the ECOSOC)
- ★ Council of Europe
- ★ Organisation for Economic Cooperation and Development (OECD)
- ★ United Nations Population Fund (UNFPA)
- ★ UN Women



## EU CIVIL SOCIETY NETWORKS

- ★ EU Work-life balance coalition
- ★ Better Internet for Kids
- ★ eTwinning
- ★ EESC – Civil Society Liaison Group
- ★ EU Alliance for Investing in children
- ★ European coalition to end violence against women and girls
- ★ European Disability Forum
- ★ European Expert Group on the transition from institutional to community-based settings
- ★ European Platform on Asylum and Migration
- ★ European Public Health Alliance
- ★ Finance Watch
- ★ Financial inclusion Europe
- ★ Right to Energy Coalition
- ★ Population Europe
- ★ Social Platform
- ★ Sustainable Development Goals Watch Europe

## CORPORATE NETWORKS

- ★ ICT Coalition for Children Online
- ★ EU Digital Citizenship Working Group
- ★ Toy Industries of Europe “Play for Change” awards



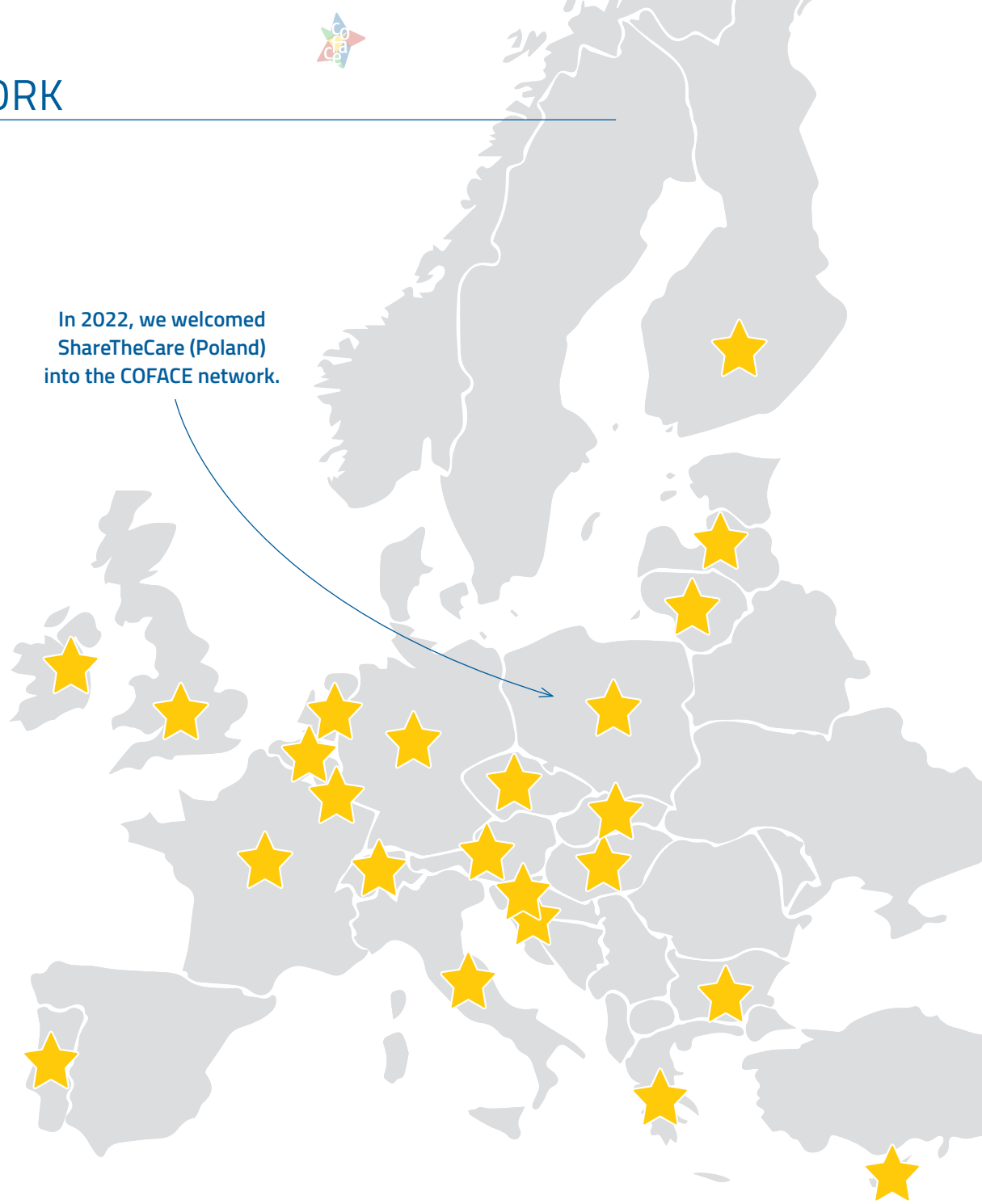


# THE NETWORK

## Members

- ★ Austria
- ★ Belgium
- ★ Bulgaria
- ★ Croatia
- ★ Cyprus
- ★ Czech Republic
- ★ Finland
- ★ France
- ★ Germany
- ★ Greece
- ★ Hungary
- ★ Ireland
- ★ Italy
- ★ Latvia
- ★ Lithuania
- ★ Luxembourg
- ★ The Netherlands
- ★ Poland
- ★ Portugal
- ★ Slovakia
- ★ Slovenia
- ★ Switzerland
- ★ United Kingdom

In 2022, we welcomed  
ShareTheCare (Poland)  
into the COFACE network.





# BEHIND THE SCENES

## We would like to thank...

**ALL our members** for their enthusiasm and active involvement offline and online.

**The COFACE Administrative Council members:** Elisabeth Potzinger (AT), Annemie Drieskens (BE), Christophe Cocu (BE), Maria Petkova (BG), Michaela Marksovà (CZ), Sven Iversen (DE), Antonia Torrens (EL), Amaia Echevarria (ES), Marina Wetzter-Karlsson (FI), Benoit Menard (FR), Silvija Stanić (HR), Anna Nagy (HU), Mary O'Halloran (IE), Gaetano Santonocito (IT), Rasa Zemaite (LT), Romain Kraemer (LU), Gonçalo Solla (PT), Peter Grabner (SL), Chantal Bruno (COFACE Disability Platform for the rights of persons with disabilities and their families), Karolina Andrian (PL).

**The four Executive Bureau members:**

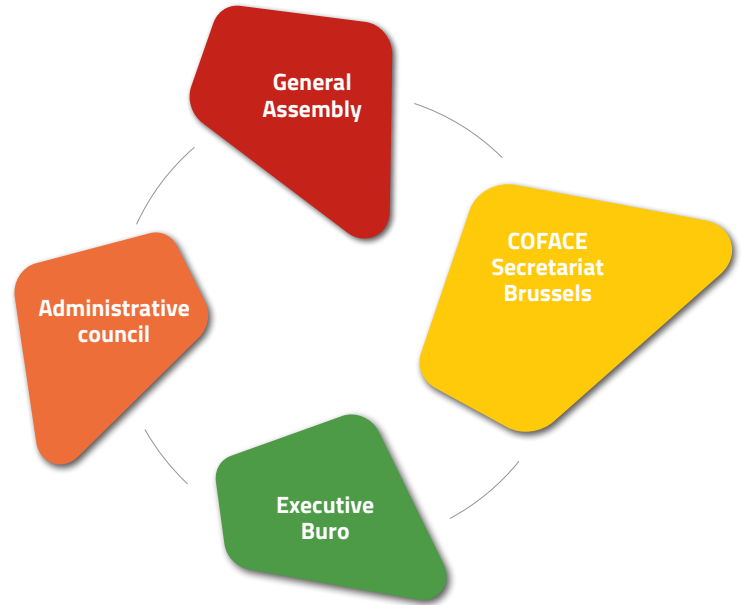
- ★ Annemie Drieskens (BE) President
- ★ Silvija Stanić (HR) Treasurer
- ★ Antonia Torrens (EL) Vice-President
- ★ Sven Iversen (DE) Vice-President

All the members of the **COFACE Disability platform** for the rights of persons with disabilities and their families, and namely the co-chairs of the platform: Sylvie Hirtz (APEMH) and Chantal Bruno (APF France Handicap).

Our **COFACE Secretariat** in Brussels, in charge of ensuring the organisation of all those events, in close cooperation with COFACE members and partners. The Secretariat is made up of Elizabeth Gosme (Director), Florian Charron (Senior Project and Finance Manager), Bettina Guigui (Communication Officer), Martin Schmalzried (Senior Policy and Advocacy Manager), Camille Roux (Senior Policy and Advocacy Officer), Holly Shorey (Project and Advocacy Officer), Attila Böhm (Policy and

Advocacy Officer), Martino Serapioni (Research programme coordinator for the European Observatory on Family Policy) and Beybin Elvin Tunç (Education programme coordinator). We would also like to thank Vincent Machado who joined us for an internship, and of course our COFACE penguin family.

And last but not least, thank you to all our partners, followers, fans, supporters, colleagues, friends, and of course, our main funder, the European Union, namely the European Social Fund Plus (Employment and Social Innovation strand), Erasmus Plus, and the Horizon Europe funding Programmes.





## Join us!

- ★ Is your organisation an NGO representing families or services to families?
- ★ Do you want to join an international community of practice to work collectively in the interest of families?
- ★ Do you want to become an expert on EU family matters?
- ★ Do you have a local innovation you would like to scale up across other EU countries?
- ★ Are you looking for best practices from other countries or seeking to set up new European projects?

**If you are interested in any of the above, you're in the right place.**



*Rue de Londres 17, 1050 Brussels, Belgium  
+32 2 511 41 79  
secretariat@coface-eu.org  
www.coface-eu.org*

 *@COFACE\_EU*  
 *@COFACE\_EU*  
 *COFACE Families Europe*  
 *familieseurope*  
 *Families Europe*



**Co-funded by  
the European Union**

Co-funded by the European Union. Views and opinions expressed are however those of the author(s) only and do not necessarily reflect those of the European Union or the European Commission. Neither the European Union nor the granting authority can be held responsible for them.